

## SUMMARY OF CONSULTATION ACTIVITIES

A landowners' consultation event was held on 29 January 2009. The presentation, answers to questions from the landowners and a summary of the comments received are available on the Council website.

A landowners' intention survey was distributed in February 2009. This survey was undertaken to allow Council to get a better understanding of landowners' long term plans for their landholdings in Maymorn and in particular to ascertain landowners' medium and long term intentions to either retain, subdivide or sell land. The information gathered through this process has been used in the preparation of potential rezoning scenarios for the Maymorn area.

A consultation event was held with stakeholders from relevant organisations (including Greater Wellington Regional Council, ONTRACK, and Ministry of Education) on 17 February 2009. This event provided a forum for group discussion with these organisations on the significant issues and themes with regard to the Structure Plan, and important values that should be protected over the long term.

## FURTHER COMMUNITY INVOLVEMENT IN THE STRUCTURE PLAN

*You are invited to attend an Open Day on the Maymorn Structure Plan*

*Saturday 18th April 2009*

*Expressions Arts and Entertainment Centre*

*836 Fergusson Drive*

*10am - 4pm*

The three land use zoning options will be on display together with supporting illustrative material. Members of the Structure Plan team will be in attendance to answer any questions that you may have, so please feel free to drop in between 10am and 4pm to learn more about the Maymorn Structure Plan.

Following this consultation a draft Structure Plan document will be prepared. The draft Structure Plan document will be subject to a four week consultation period in May/June 2009.

Final modifications will be made resulting from the consultation period, and the Structure Plan presented to Council for consideration.

## CONTACTING THE STRUCTURE PLAN TEAM

**Mitch Lewandowski**

Project Coordinator - Urban Growth Strategy

Upper Hutt City Council

Private Bag 907

UPPER HUTT 5140

[mitch.lewandowski@uhcc.govt.nz](mailto:mitch.lewandowski@uhcc.govt.nz)

[www.upperhuttcity.com](http://www.upperhuttcity.com)



# MAYMORN STRUCTURE PLAN

## NEWSLETTER 3



April 2009

# MAYMORN STRUCTURE PLAN

The purpose of this third newsletter is to provide an update on the Maymorn Structure Plan process, specifically on the work that has been undertaken since the completion of Stage 2 (Site Analysis and Capacity Study).

The full report from this Stage 2 work is available on the Council website: [www.upperhuttcity.com](http://www.upperhuttcity.com) under Plans and Reports – Maymorn Structure Plan.

The team has recently commenced work on Stage 3 “Evaluation of Development Alternatives and Preferred Option”.

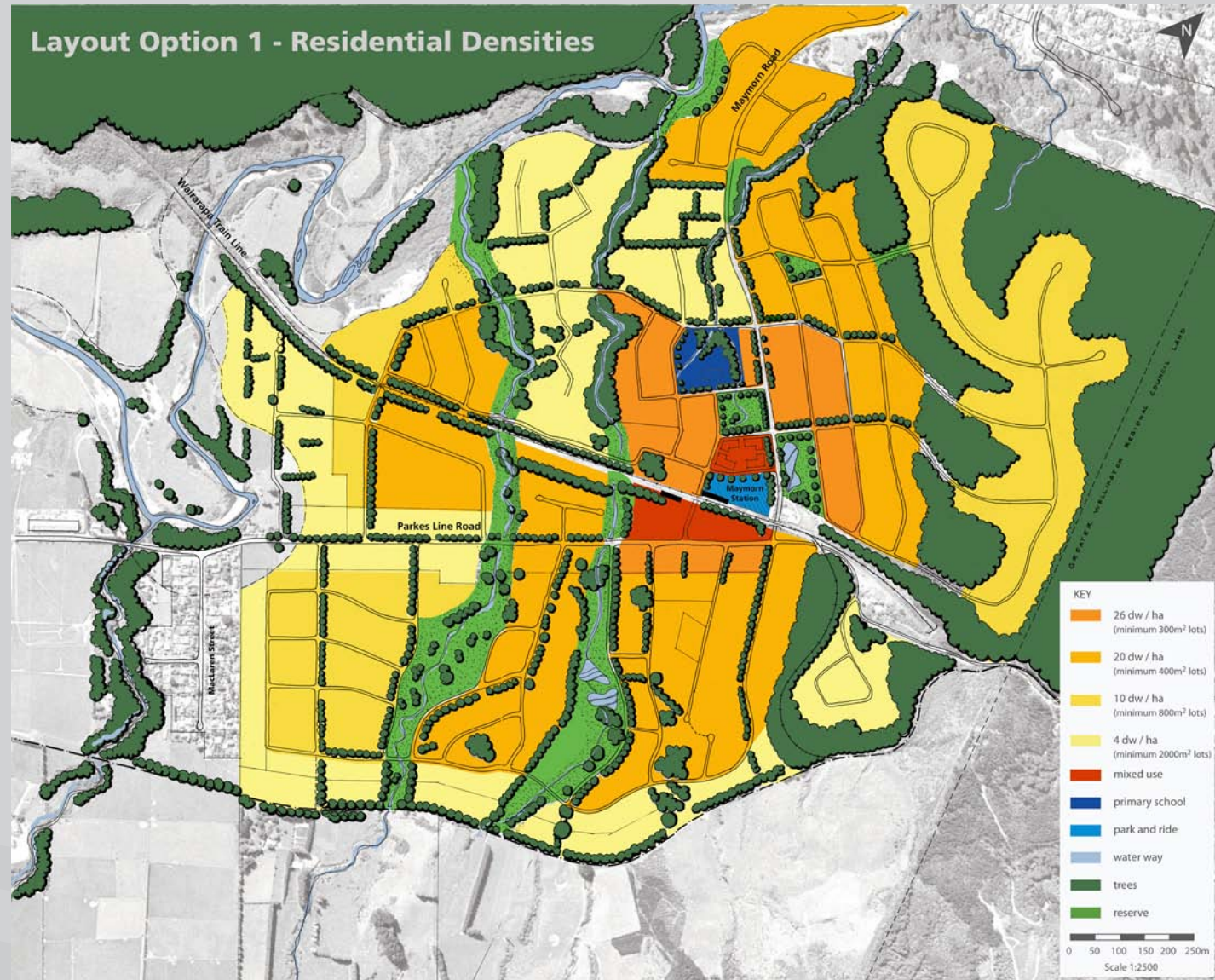
The purpose of this piece of work is to:

- // Consider feedback from consultation and to produce possible land use zoning layout options
- // Undertake technical feasibility studies on each option
- // Evaluate the options and identify a preferred option

## THREE ZONING OPTIONS

Three land use zoning options have emerged from the consultation activities outlined above.

For each option a plan has been developed that outlines the locations of residential density based around the location of the neighbourhood centre.



The resultant housing numbers vary from 1357 to 1647 dwellings. Possible road hierarchies, pedestrian and cycle networks, and a landscape and open space structure have been developed for each option.

Technical feasibility studies are being undertaken on each option; analysing transport, storm water management, utilities, housing mix and environmental issues, which will help to evaluate and determine a preferred option.