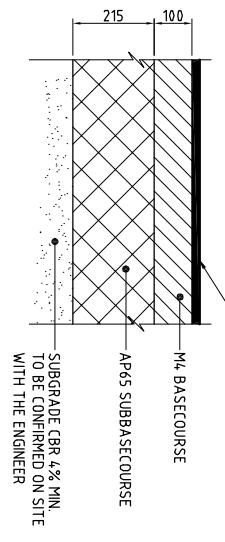


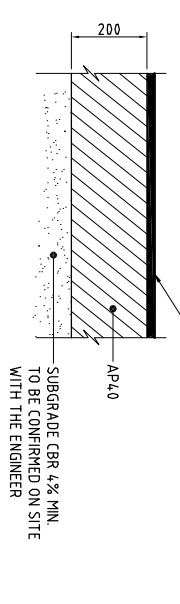
**PAVEMENT LAYOUT**  
SCALE 1:250 (A1)

**NOTES:**

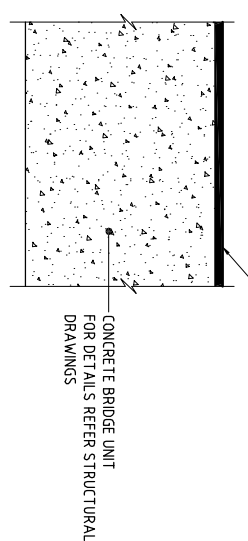
1. FOR DETAILS OF PAVEMENT AND BARRIER ON BRIDGE REFER TO STRUCTURAL DRAWINGS
2. T13 W-SECTION BARRIER EXTENDED OVER LENGTH OF MSE WALL, REFER TO STRUCTURAL DRAWINGS
3. LEADING END TERMINAL SHALL BE PROVIDED IN ACCORDANCE WITH NZTA M23 REQUIREMENTS. ALL LENGTHS ARE TO BE CONFIRMED BY THE ENGINEER IN AGREEMENT WITH UHCC PRIOR TO CONSTRUCTION
4. CUT SLOPES TO BE LOCALLY STEEPENED AND REINFORCED WITH SHOTCRETE SHALL BE AGREED WITH THE ENGINEER.



**1 TYPE 1 ROAD PAVEMENT**  
SCALE 1:10 (A1)



**2 TYPE 2 PAVEMENT**  
SCALE 1:10 (A1)



**3 TYPE 3 PAVEMENT**  
SCALE 1:10 (A1)

**LEGEND:**

- T13 W-SECTION BARRIER EXTENDED, REFER TO STRUCTURAL DRAWINGS FOR PEDESTRIAN RAIL
- W-SECTION LEADING END TERMINAL SHALL BE NZTA M23 COMPLIANT X-350 ARMORTEX LEADING-END TERMINAL OR SIMILAR APPROVED WITH HAZARD MARKER POST
- EARTH SWALE (REFER DETAIL E DWG 103)
- CONCRETE SWALE (REFER DETAIL F DWG 103)
- NEW ROAD PAVEMENT (TYPE 1)
- NEW SHOULDER PAVEMENT (TYPE 2)
- NEW BRIDGE (TYPE 3)
- MSE WALLS
- EXTENT OF MSE WALL REFER TO STRUCTURAL DRAWINGS

No.	FOR TENDER	Revision	By	CHK	APPD	Date
0			WZC	WM	BJS	30.09.10

Drawing Originator:

Original Scale (A1)	Design	PC/WM	25.06.10	Approved For
1:250	Drawn	MBC	23.08.10	Construction*
Reduced Scale (S)	Design Verifier	PC	30.09.10	
1:500	Lang Check	WM	21.08.10	Date

\*Refer to Revision 1 for Original Signature

Client:

Project: REPLACEMENT OF AKATARAMA BRIDGES B 1/4, B 1/5 & B 1/6

Title: BRIDGE B 1/6 PAVEMENT LAYOUT, BARRIER & DRAINAGE PLAN & DETAILS

Discipline: CIVIL

Drawing No. 5273315-C-301

Rev. 0

**FOR TENDER**  
**NOT FOR CONSTRUCTION**