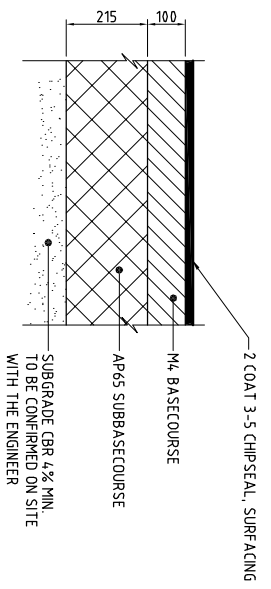
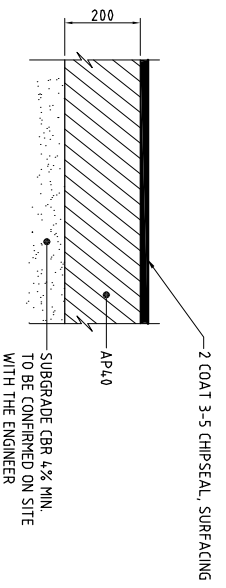


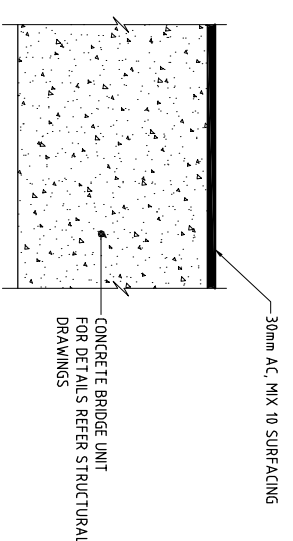
PAVEMENT LAYOUT
SCALE 1:250 (A1)



1 TYPE 1 ROAD PAVEMENT
SCALE 1:10 (A1)



2 TYPE 2 PAVEMENT
SCALE 1:10 (A1)



3 TYPE 3 BRIDGE PAVEMENT
SCALE 1:10 (A1)

- NOTES :**
- FOR DETAILS OF PAVEMENT AND BARRIER ON BRIDGE REFER TO STRUCTURAL DRAWINGS
 - TL3 W-SECTION BARRIER EXTENDED OVER LENGTH OF MSE WALL, REFER TO STRUCTURAL DRAWINGS
 - LEADING END TERMINAL SHALL BE PROVIDED IN ACCORDANCE WITH NZTA M23 REQUIREMENTS. ALL LENGTHS ARE TO BE CONFIRMED BY THE ENGINEER IN AGREEMENT WITH UHCC PRIOR TO CONSTRUCTION

- LEGEND:**
- TL3 W-SECTION BARRIER EXTENDED. REFER TO STRUCTURAL DRAWINGS FOR PEDESTRIAN HAND RAIL
 - W-SECTION LEADING END TERMINAL SHALL BE NZTA M23 COMPLIANT X-350 ARMORFLEX LEADING-END TERMINAL OR SIMILAR APPROVED WITH HAZARD MARKER POST
 - EARTH SWALE (REFER DETAIL E DWG 103)
 - CONCRETE SWALE (REFER DETAIL F DWG 103)
 - NEW ROAD PAVEMENT (TYPE 1)
 - NEW SHOULDER PAVEMENT (TYPE 2)
 - NEW BRIDGE (TYPE 3)
 - MSE WALLS
 - EXTENT OF MSE WALL REFER TO STRUCTURAL DRAWINGS

No.	FOR TENDER	Revision	By	CHK	APPD	Date
0			MZC	WM	BJS	30.09.10

Original Scale (A1)	1:250	Design	PC/WM	25.06.10	Approved For
Reduced Scale (A3)	1:500	Drawn	MBC	25.06.10	Construction*
		Design Checker	WM	30.09.10	
		Refer to Revision 1 for Original Signature		26.07.10	Date



Project: REPLACEMENT OF AKATARAWA BRIDGES B 1/4, B 1/5 & B 1/6

Title: BRIDGE B 1/5 PAVEMENT LAYOUT, BARRIER & DRAINAGE PLAN & DETAILS

Discipline	CIVIL
Drawing No.	5273315-C-201
Rev.	0

FOR TENDER
NOT FOR CONSTRUCTION