

Keeping you informed on the...

Akatarawa Road Bridge Replacement Programme

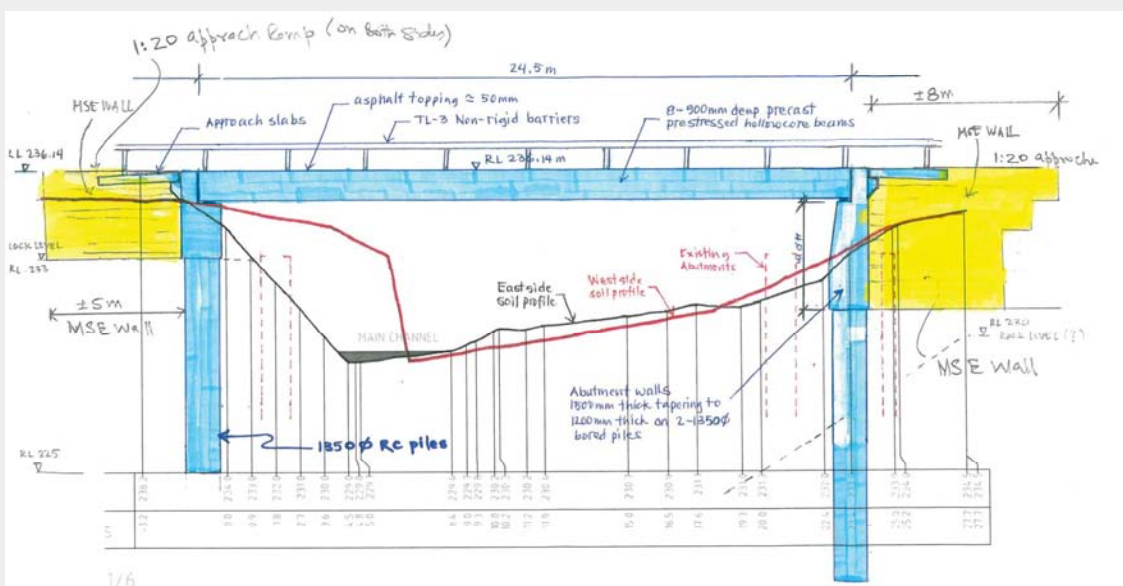
3 September 2010

The design phase of this project is now coming to a conclusion. A building consent has been issued by Upper Hutt City Council for the first bridge (B1/4) by Wellesley Camp.

Site investigations have been completed for the other two bridges (B1/5 and B1/6) and the design will be finished in the next few days. It is expected that a building and resource consent application will be lodged next week.

A resource consent application for bridge B1/4 has been lodged with Greater Wellington and it is hoped that a consent will be issued shortly.

The contract to construct the three bridges will go out to public tender in September 2010.



Preliminary sketch for Bridge 1/6

To register for future updates by email visit www.upperhuttcity.com/akatarawa and click on the link to register.